

Mesh

All Time Best Seller!

Now available in Silver too!



KB-8901B

\$365

Grade B \$420, Grade C \$440

Heavy-duty knee tilt with multi-position lock and tilt tension adjustment. Adjustable depth/height lumbar support. Personalize it with optional custom upholstery (shown) for a small additional charge. **KB-8901B Silver \$365**

New improved quality meets BIFMA Testing Standards

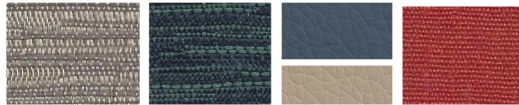


GW-Sport

\$430

Grade B \$485, Grade C \$505

Orange, Green, and Black colors. Flexible Back, Swivel Tilt mechanism with tilt lock and tilt tension. Cast Aluminum Base.



Optional Upholstery Fabric Examples

Seating



KB-8920B

\$390

Grade B \$465, Grade C \$490

2:1 synchro-tilt with tilt-lock and adjustable tilt-tension. Stool version on page 29.



KB-2022 BLACK

\$250

Grade B \$325, Grade C \$350

Sturdy swivel-tilt with tilt tension and tilt lock. Mesh back, upholstered seat. Black frame.



KB-2022 WHITE/GRAY

\$275

Grade B \$350, Grade C \$375

Sturdy swivel-tilt with tilt tension and tilt lock. Mesh back, upholstered seat. White/Gray frame.

Mesh

ARES has extra thick injection molded "Cushy-Tushy" seat cushions.



NEW



AR-1509 \$440

Grade B \$515, Grade C \$540

2:1 synchro-tilt with 3 position lock, **Seat-Slider**, height and tension adjustments, separate height adjustable lumbar pad, ratchet back, & height and width adjustable arms, class 4 HD gas cylinder, and cushy injection molded foam seat cushion.



AR-1505 \$440

Grade B \$495, Grade C \$515

Multi-adjustable asynchronous with **Seat-Slider**, ratchet-back, forward tilt with adjustable lockout angle, & height/width adjustable arms.



AR-1501 \$330

Grade B \$385, Grade C \$405

2:1 synchro-tilt, ratchet back, height adjustable, tilt tension, and height/width adjustable arms.



ES-3937 SS \$530

Grade B \$585, Grade C \$605

Highly adjustable, **Seat-Slider** with seat angle, ratchet-back, & height/width adjustable arms.



ES-3932 \$390

Grade B \$445, Grade C \$465

2:1 synchro-tilt, ratchet back, height adjustable, tilt tension, and height/width adjustable arms.



ES-3957 SS \$545

Grade B \$600, Grade C \$620

2:1 synchro-tilt with 3-position lock, **Seat-Slider**, ratchet back, & height/width adjustable arms.



KB-2011 \$240

Grade B \$295, Grade C \$315

Posture back task chair with spring tension and height adjustable arms.



SX-W4068 \$210

Grade B \$265, Grade C \$285

Swivel-tilt mesh back chair with tilt-lock and tilt tension adjustment. Inexpensive and durable!

Mesh

These Chairs
Meet BIFMA
Testing Standards.



HU-X15 Headrest option available.



HU-X15 Synchro SILVER or BLACK \$480

Grade B \$535, Grade C \$555

This NEW and improved softer seat boasts injection molded foam, heavy-duty synchro tilt with multi-position lock, tilt-tension adjustment, & adjustable height lumbar support. Optional swivel arm pad, HU-X15 Synchro Arm Only, add \$70. Headrest is \$60 extra.



KB-8915B \$445

Grade B \$500, Grade C \$520

Multi-adjustable synchro back, height adjustable arms, and lumbar support. Thick foam seat.



Black is Standard. Custom Fabric Options are Available.

Seating



HU-X3-01B-MF \$650

Grade B \$705, Grade C \$725

Great value with black mesh back. Custom upholstery available.



HU-T-086-B-M BLACK or SILVER \$780

A new true mesh chair with fingertip controls. Synchro-tilt, multi-position lock, Seat Slide, adjustable lumbar and arms. Silver or Black.